

()

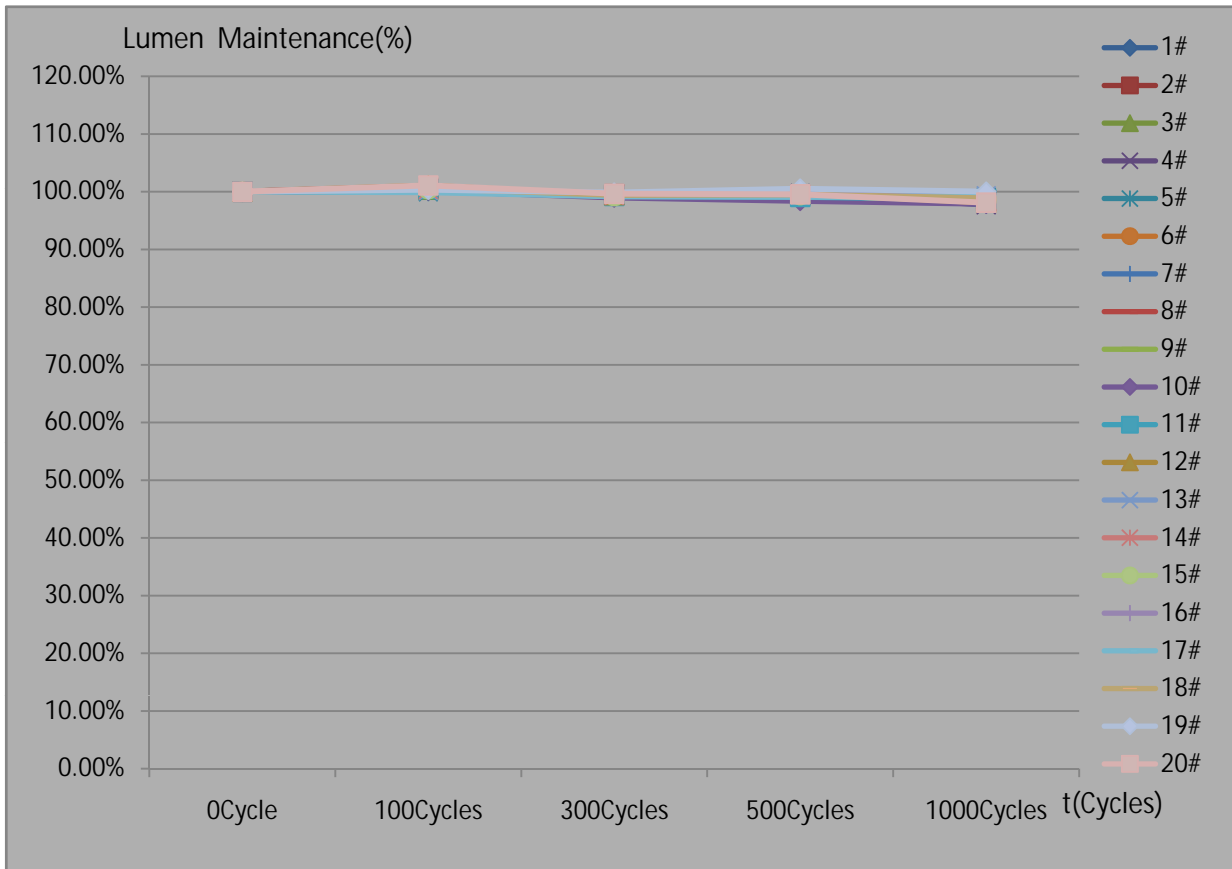
: LAB0206014-01

1

6

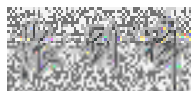
1. : - - - - /
 2. : 1# 20#
 3. () / : RF-V6HP32DS-AF-I3/SC17-200507071
 4. : 2020.6.4 2020.7.1
 5. : LED (G118471CA833115) 141152
 FLUKE (34700492MS) (N0842010) (TST1005028)
 (MT 4X) DSX500 4B43960
 6. : (22 28) (30 70) %RH
 7. : N GB/T 2423.22-2012
 LED CIE127 2007
 8.
 9. : 125 2H 1 SM W-R00-004
 -40 (15min) 100 (15min) 10s 1000Cycles 100mA
 2 0Cycle 100Cycles 300Cycles 500Cycles 1000Cycles

(lm)

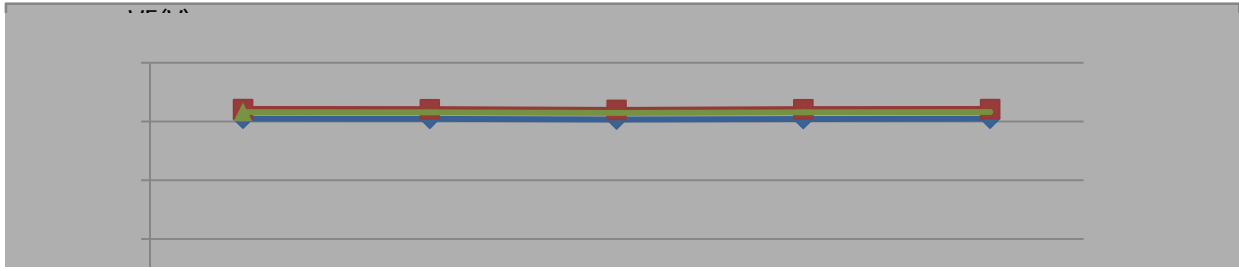


:  2020.07.02

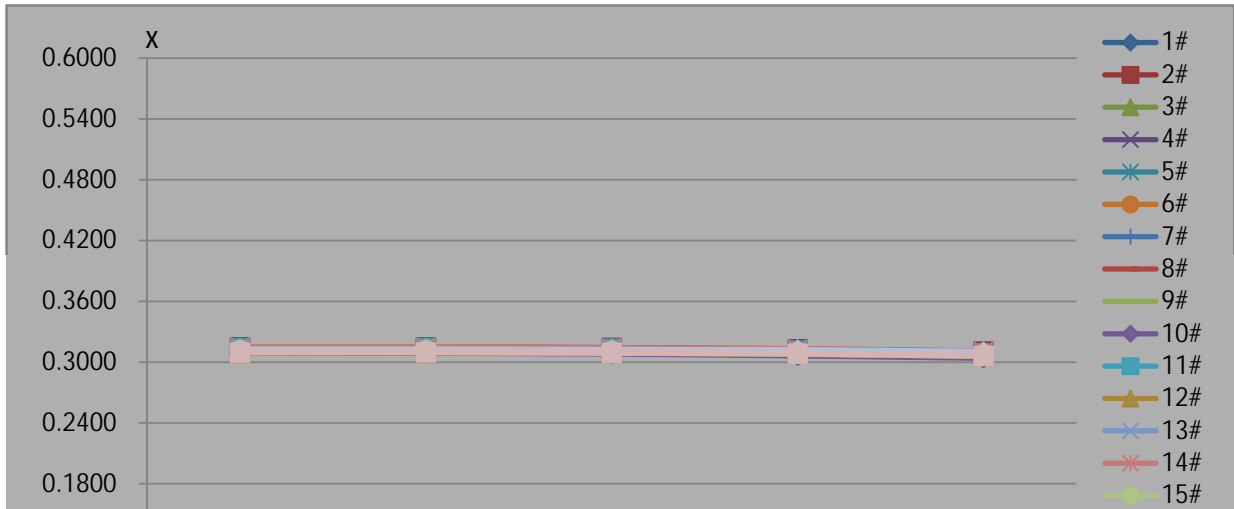
:  2020.07.06

:  2020.07.07

Vf(V)



x



	(In)					Lunen Maintenance(%)				
	0Cycle	100Cycles	300Cycles	500Cycles	1000Cycles	0Cycle	100Cycles	300Cycles	500Cycles	1000Cycles
1#	110.50	110.80	110.20	110.20	109.50	100.00%	100.27%	99.73%	99.73%	99.10%
2#	122.10	122.80	121.60	121.30	120.10	100.00%	100.57%	99.59%	99.34%	98.36%
3#	120.60	121.00	119.90	120.10	119.10	100.00%	100.33%	99.42%	99.59%	98.76%
4#	111.20	112.30	110.50	110.90	108.70	100.00%	100.99%	99.37%	99.73%	97.75%
5#	111.80	111.80	111.30	111.30	110.70	100.00%	100.00%	99.55%	99.55%	99.02%
6#	119.90	120.60	119.30	119.60	118.30	100.00%	100.58%	99.50%	99.75%	98.67%
7#	119.70	120.30	118.70	118.50	117.20	100.00%	100.50%	99.16%	99.00%	97.91%
8#	110.80	111.80	110.10	110.40	108.90	100.00%	100.90%	99.37%	99.64%	98.29%
9#	110.40	110.60	110.00	109.70	109.30	100.00%	100.18%	99.64%	99.37%	99.00%
10#	118.80	119.00	117.60	116.90	116.30	100.00%	100.17%	98.99%	98.40%	97.90%
11#	122.00	122.60	121.10	120.90	120.40	100.00%	100.49%	99.26%	99.10%	98.69%

	IF(nA)				
	0Cycle	100Cycles	300Cycles	500Cycles	1000Cycles
1#	100.01	100.01	100.01	99.98	100.00
2#	100.01	100.01	100.01	100.00	100.01
3#	100.01	100.01	100.00	100.00	100.01
4#	100.00	100.01	100.01	100.00	100.01
5#	100.01	100.01	100.01	99.98	100.01
6#	100.00	100.01	100.01	99.98	100.00
7#	100.01	100.00	100.01	99.98	100.00
8#	100.01	100.01	100.00	100.00	100.00
9#	100.01	100.01	100.00	99.98	100.01
10#	100.00	100.00	100.01	100.00	100.01
11#	100.00	100.00	100.01	100.00	100.01
12#	100.01	100.00	100.01	99.98	100.01
13#	100.01	100.01	100.00	99.98	100.01
14#	100.01	100.01	100.01	100.00	100.01
15#	100.01	100.00	100.01	100.00	100.01
16#	100.01	100.00	100.01	100.00	100.01
17#	100.00	100.00	100.01	99.98	100.01
18#	100.01	100.00	100.00	99.98	100.01
19#	100.00	100.00	100.00	99.98	100.01
20#	100.01	100.01	100.01	100.00	100.01

	x					x				
	0Cycle	100Cycles	300Cycles	500Cycles	1000Cycles	100Cycles	300Cycles	500Cycles	1000Cycles	
1#	0.3107	0.3112	0.3103	0.3093	0.3074	0.0005	-0.0004	-0.0014	-0.0033	
2#	0.3147	0.3147	0.3142	0.3128	0.3106	0.0000	-0.0005	-0.0019	-0.0041	
3#	0.3109	0.3108	0.3107	0.3098	0.3081	-0.0001	-0.0002	-0.0011	-0.0028	
4#	0.3130	0.3132	0.3126	0.3115	0.3085	0.0002	-0.0004	-0.0015	-0.0045	
5#	0.3124	0.3125	0.3121	0.3114	0.3090	0.0001	-0.0003	-0.0010	-0.0034	
6#	0.3108	0.3110	0.3105	0.3099	0.3076	0.0002	-0.0003	-0.0009	-0.0032	
7#	0.3118	0.3117	0.3112	0.3098	0.3080	-0.0001	-0.0006	-0.0020	-0.0038	
8#	0.3101	0.3101	0.3096	0.3085	0.3063	0.0000	-0.0005	-0.0016	-0.0038	
9#	0.3100	0.3103	0.3098	0.3084	0.3063	0.0003	-0.0002	-0.0016	-0.0037	
10#	0.3091	0.3092	0.3085	0.3065	0.3041	0.0001	-0.0006	-0.0026	-0.0050	
11#	0.3137	0.3137	0.3133	0.3113	0.3089	0.0000	-0.0004	-0.0024	-0.0048	
12#	0.3098	0.3098	0.3093	0.3083	0.3063	0.0000	-0.0005	-0.0015	-0.0035	
13#	0.3136	0.3137	0.3133	0.3122	0.3105	0.0001	-0.0003	-0.0014	-0.0031	
14#	0.3150	0.3150	0.3142	0.3132	0.3108	0.0000	-0.0008	-0.0018	-0.0042	
15#	0.3122	0.3122	0.3114	0.3101	0.3079	0.0000	-0.0008	-0.0021	-0.0043	
16#	0.3119	0.3119	0.3115	0.3110	0.3090	0.0000	-0.0004	-0.0009	-0.0029	
17#	0.3101	0.3100	0.3096	0.3081	0.3063	-0.0001	-0.0005	-0.0020	-0.0038	
18#	0.3126	0.3128	0.3120	0.3108	0.3085	0.0002	-0.0006	-0.0018	-0.0041	
19#	0.3125	0.3125	0.3122	0.3120	0.3103	0.0000	-0.0003	-0.0005	-0.0022	
20#	0.3095	0.3097	0.3093	0.3084	0.3062	0.0002	-0.0002	-0.0011	-0.0033	

()

	0Cycle	100Cycles	300Cycles	500Cycles	1000Cycles	100Cycles	300Cycles	500Cycles	1000Cycles
1#	0.3337	0.3345	0.3325	0.3303	0.3272	0.0008	-0.0012	-0.0034	-0.0065