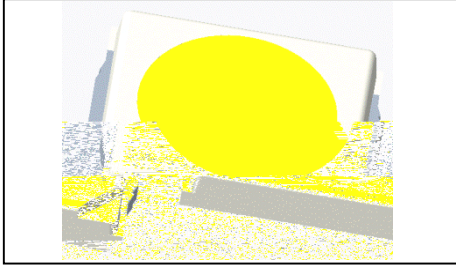


SPECIFICATION



1. Description

1.1



2.8mmX3.5mmX0.7mm

LED

2.8mmX3.5mmX0.7mm

1.2 Features



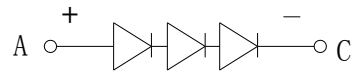
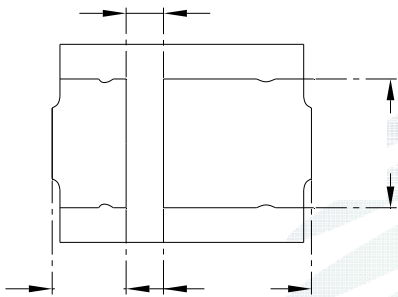
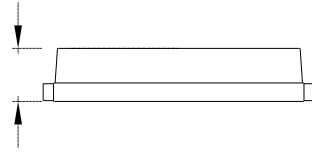
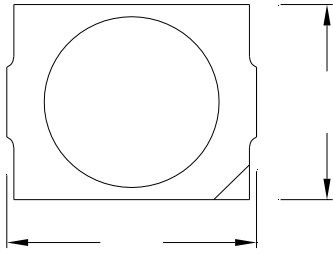
SMT

Level 3

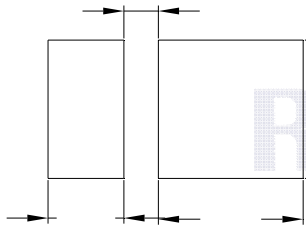
RoHS

1.3 Application

1.4 Package Dimension



A: anode
C: cathode



REFOND

1.

2.

±0.05

1.5 Product Parameters



0.1ms, 1/10.

±0.1V.

0.005.

ESD2000V

. LED

90% LED

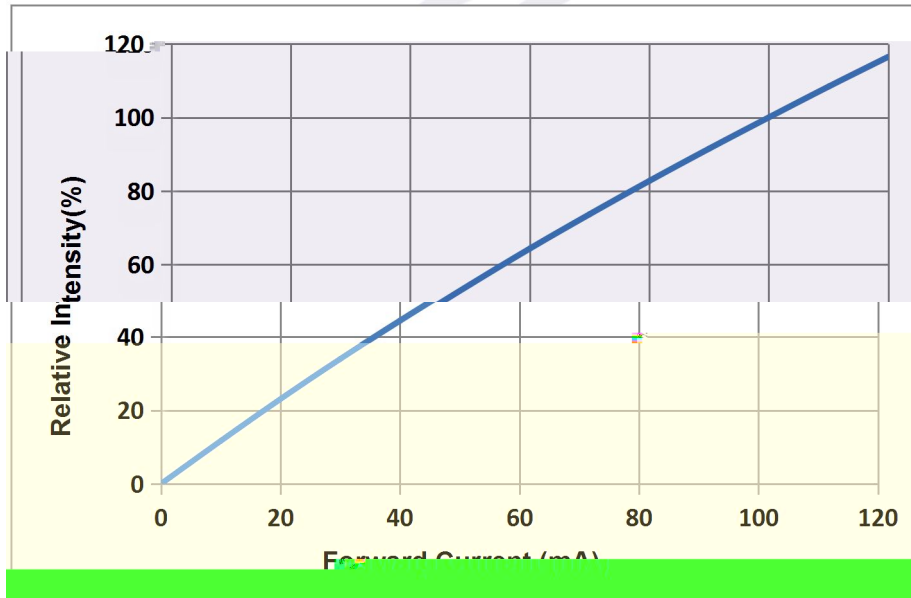
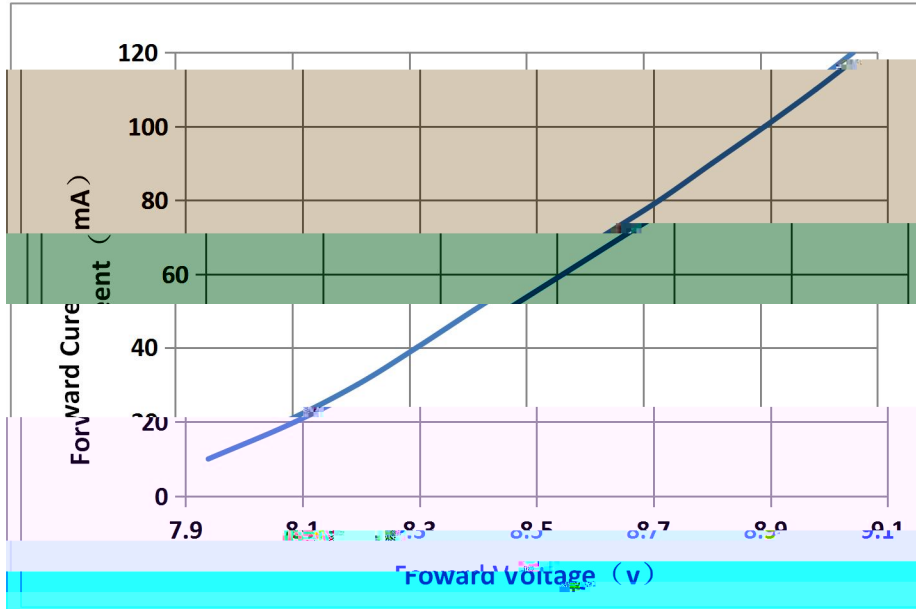
1.6 Bin Range Of Forward Voltage and Luminous Flux (IF=100mA)

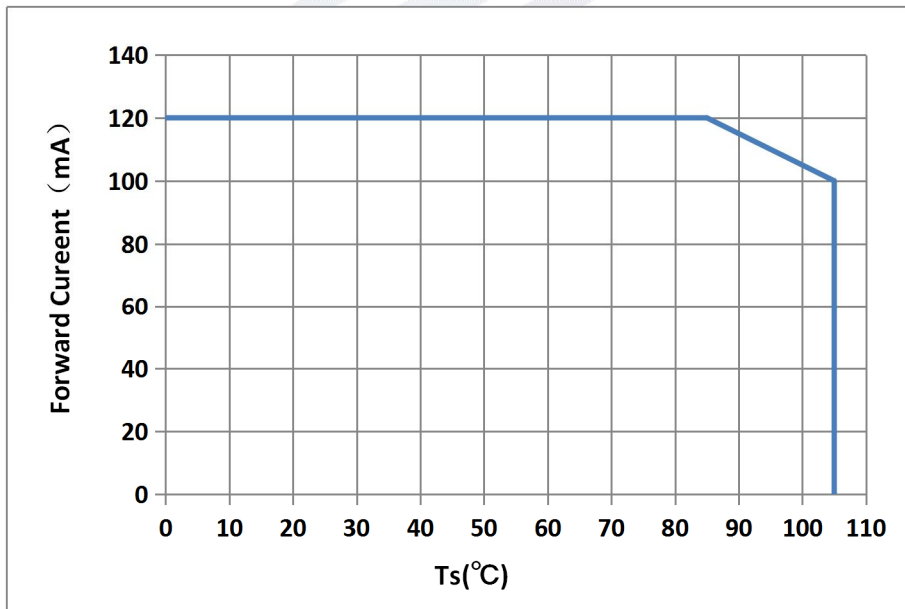
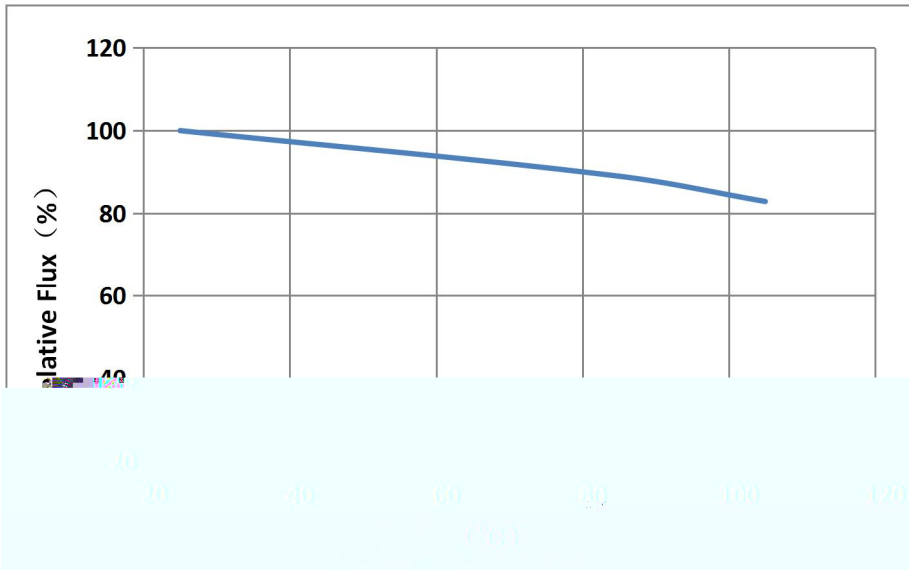
BIN (IF=100mA)

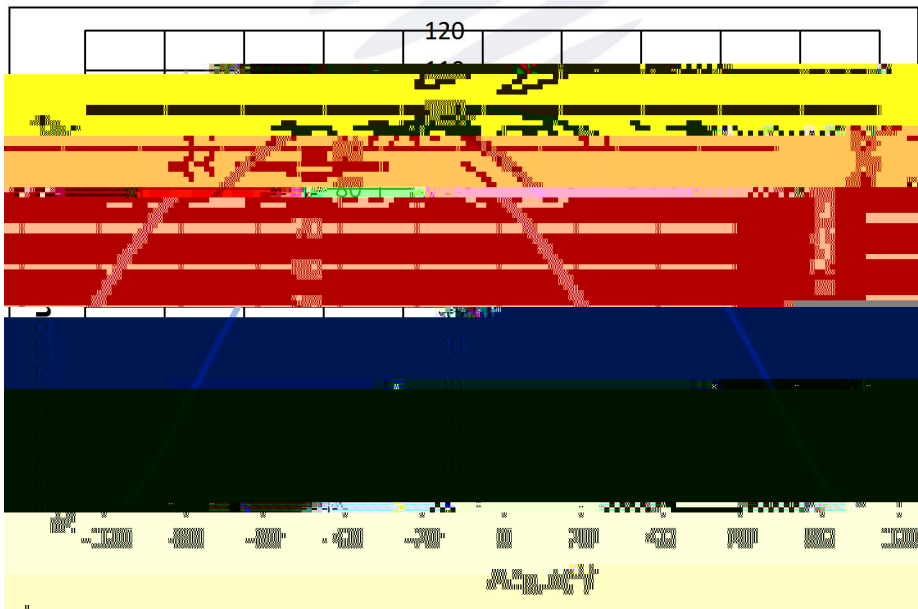
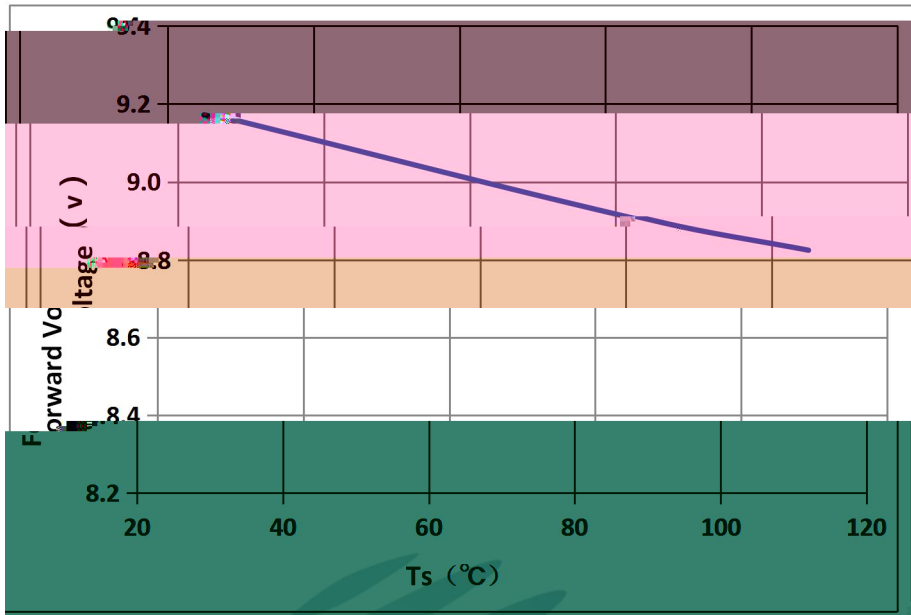
φ			

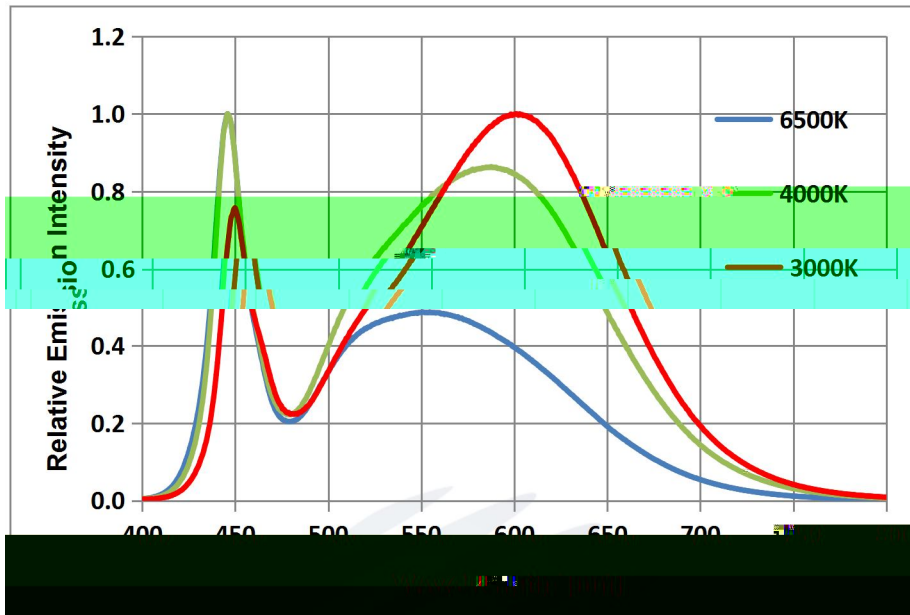


1.7 Typical optical characteristics curves









REFOND

2. Packaging

2.1 Packaging Specification

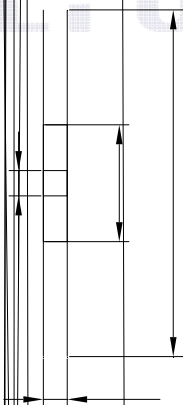
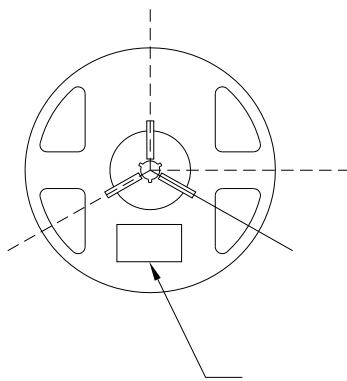
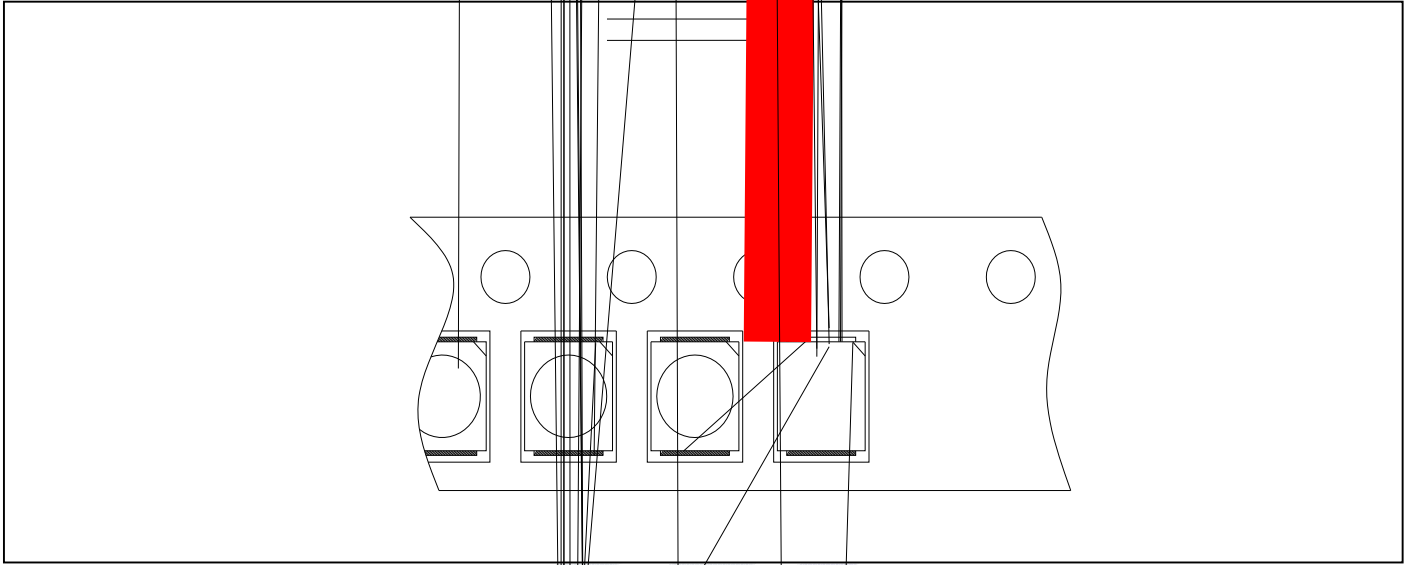
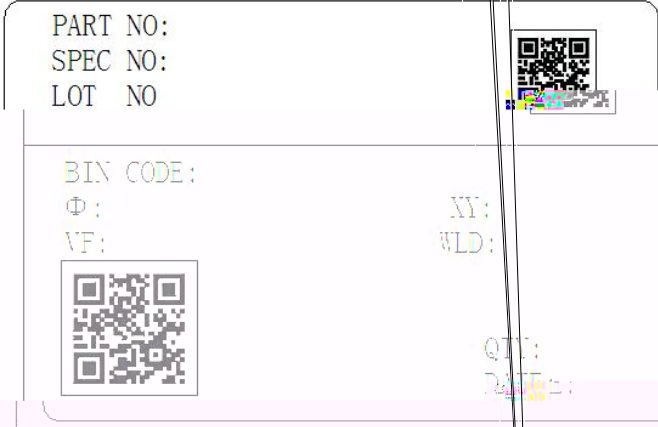


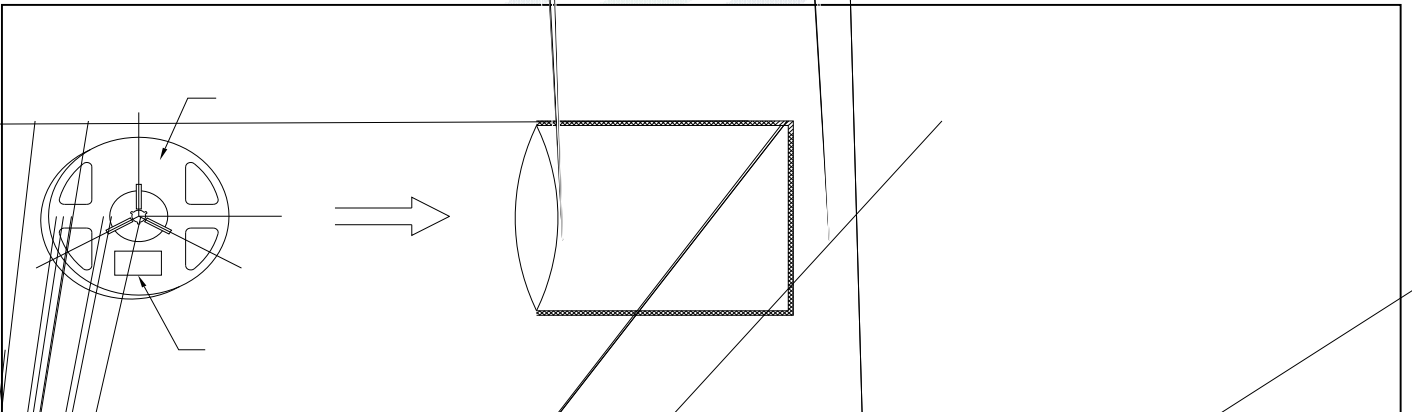
Table 2-1 Title

	±
	±
	±
	±

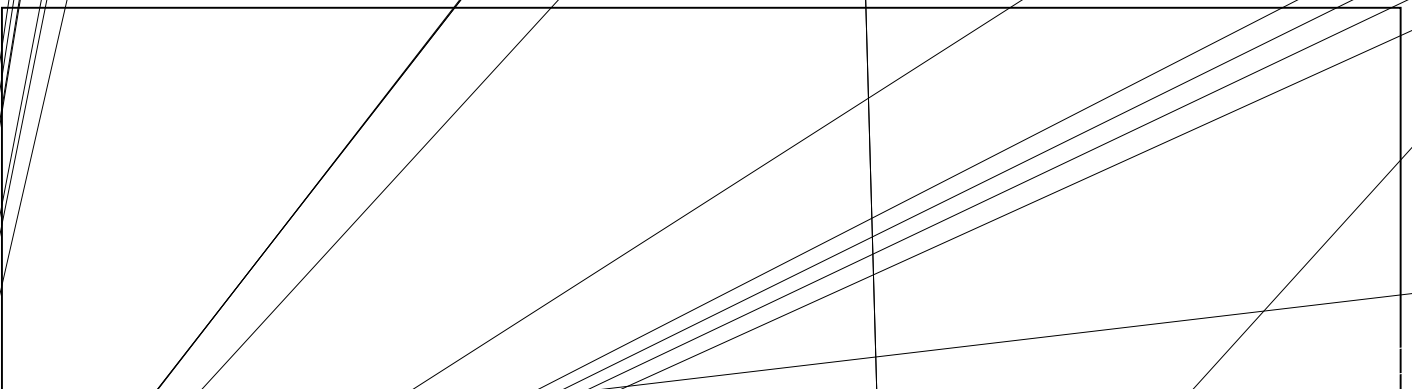
Table 2-2 Title



2.2 Moisture Resistant Packing



2.3 Cardboard Box



2.4 Reliability Test Items And Conditions



2.5 Criteria For Judging Damage

REFOND

LED

300 3

LED

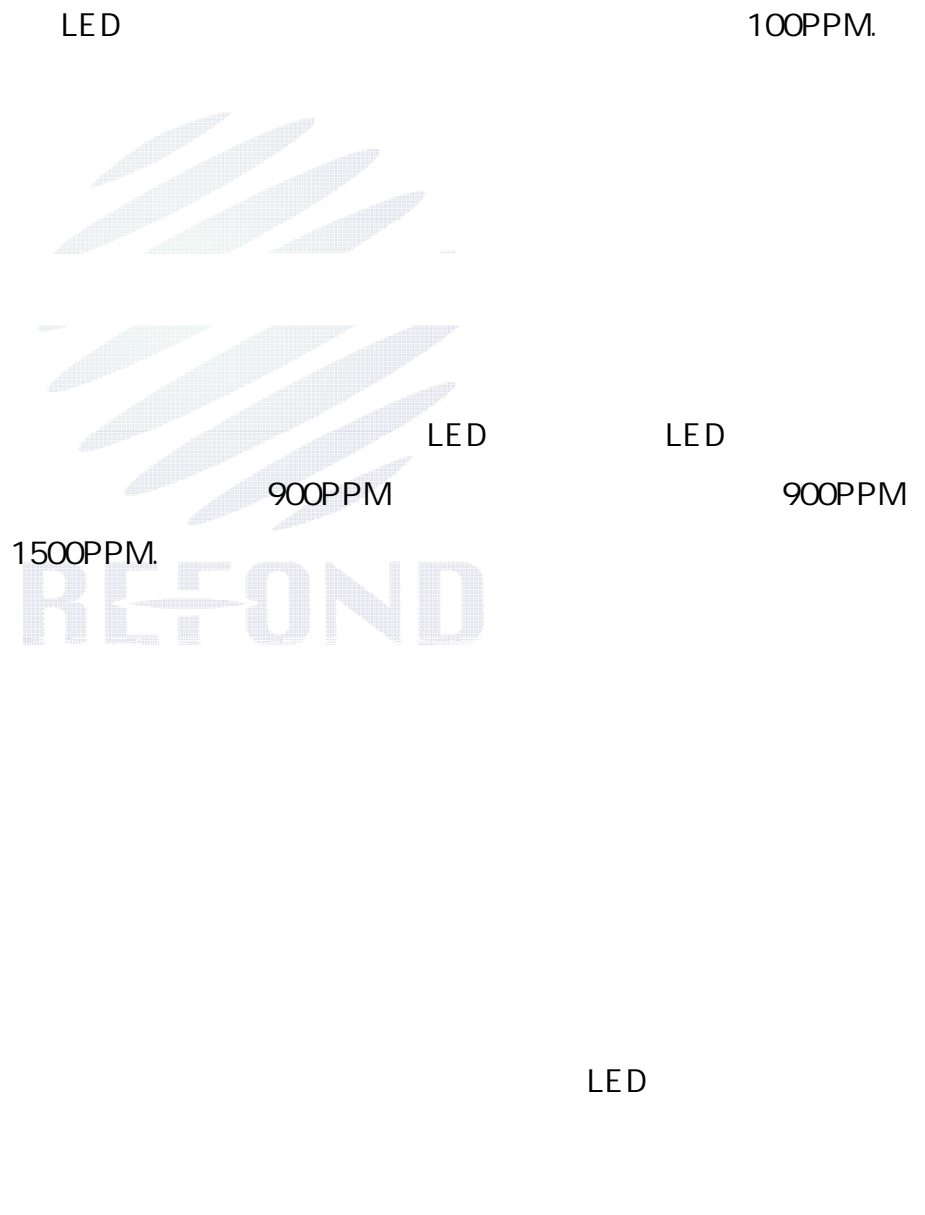


LED

PCB

4. Handling Precautions

4.1 Handling Precautions



LED

REFOND
60±5 24

LED

